

1A Old Haymarket 73-89 Victoria Street, Liverpool, L1 6AF
Tel: 0151 305 2577
Email: liverpoolsales@ascendproperties.com
www.ascendproperties.com

Ascend

Built on higher standards



Upper Parliament Street, Liverpool

Asking Price £37,000

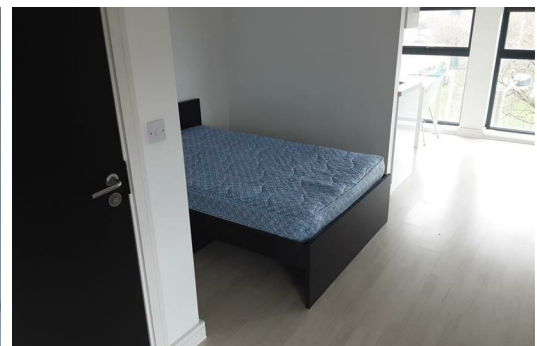
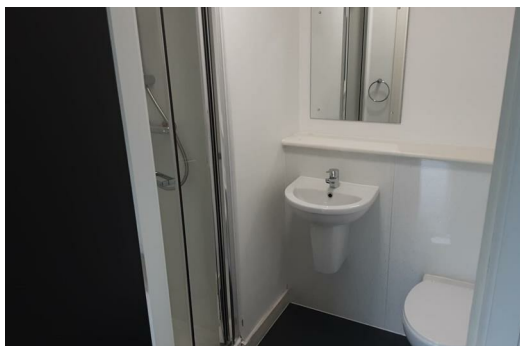
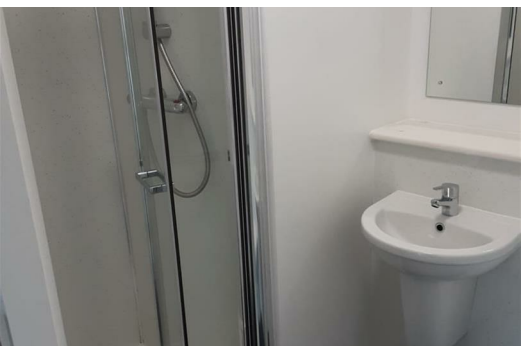
Ideal for investors, this studio apartment has everything you need and is just a stone's throw from the University of Liverpool. Situated just outside the Georgian Quarter, and a few minutes outside of Toxteth, you have both the old historical and new up-and-coming areas to explore. With buses on your doorstep, it's a 15-minute journey into town, where you can no doubt make the most of Liverpool's fantastic shopping, music scene, and nightlife.

The apartment is generously proportioned with a double bed, bathroom with shower, desk perfect for studying, and a stylish compact kitchen complete with a dining space that can easily seat guests. With large floor to ceiling windows facing the entrance, the kitchen, and your desk, you have ample light where you need it the most. Nicely secluded in the centre of the apartment with plenty of space either side, is comfortably tucked away allowing you to sleep in peace.

With its short distance to the university, neighbouring bus stops, and Edge Hill train station, you'll be well connected and ready to make the most of living in Liverpool. If you're interested in having a closer look, or have any questions, do get in touch.

Images are for marketing purposes only

Lease- 255yrs from 2015



Parliament Place, 42 Upper Parliament Street, Liverpool, Merseyside, L8 7QE



Energy Efficiency Rating		Environmental Impact (CO ₂) Rating	
Current	Potential	Current	Potential
93	93	B	B
92	92	C	C
91	91	D	D
90	90	E	E
89	89	F	F
88	88	G	G